



Week 10, Tuesday, December 12th, 2017

Due to enrolled children's life threatening anaphylactic allergic reactions to eggs, all nuts and peanut products, we would like to encourage families not to send these products to school with their children. These include peanut butter, nutella, sesame seeds, loose nuts, muesli, nut or chocolate bars or any products containing any type of nuts.

NEWSLETTER WEEK 10 TERM 4

2018 Calendar Term 1

Week 1

Mon 29/1: Staff only return
Tues 30/1: Students return
Fri 2/2: Swimming Carnival

Week 3

Mon 12/2: School Photos

FROM THE PRINCIPAL

Well Done Year 6! You have reached the end of your time at Swansea Public School. We are very proud of the young citizens you have become and know that you will take the values and work ethic instilled in you from your time at SPS. We wish you well as you start your High School journey. I would like to thank the Stage 3 staff who worked to organise last week's farewell - the students thoroughly enjoyed it.

Congratulations to our incoming Student Leaders for 2018 :

School Captains – Kirsty T and Dean C.
Prefects – D'Laney B, Tanah S, Tex L and Koda D.

Well done to all the students who were recognised for their outstanding achievements at our annual Presentation Day last Friday.

Lastly I would like to thank students, staff and community for all the wonderful things you do everyday in our school. Have a safe and happy holiday.

PBL



the name of our
PBL bee is

Buzzy

Uniform Shop

Open 2018

Mon 29th Jan - 9 am to 11am

Tues 30th Jan - 8:40 am to 9:40am



Have a safe, happy holiday!

2018

We are looking forward to welcoming our new Kindergarten students. Kindergarten students should arrive at 9.45am and be picked up at 2.30pm on the first day 30th January.

For the remainder of Week 1 Kindergarten will start at 9am and finish at 2.45pm.

Normal school hours (9am-3pm) will commence for Kindergarten students from week 2.



Congratulations to our winners

Academic Winners

Shylah G	Dylan S	Angelyn A
Scarlett T	Peyton F	Telisha L
Marli M	Jack S	Beau R
Charlotte JW	Felix T	Nina P
Indi P	Oliver TJ	Sutinee P
Angus K	Raphelle L	Erin L
Harrison C	Izzy R	Tex L
Lilly C	Hannah C	D'Laney B
Taya B	Harper W	Benjamin M
Jackson K	Zac S	Banita BG
Daniel F	Celina MA	Lilly M
Jesse B	Kurtis C	Declan L
Rianna T	Shakira L	Bella C
Leyton Y	Jayden M	Jonah R
Brody R	Allira C	Kailin D

Sporting Achievements

Swimming

Jnr Boy:	Archer N	Jrn Girl:	Taylissa B
11 Yr Boy:	Bailey W	11 Yr Girl:	Ricada J
Snr Boy:	Zeek F	Snr Girl:	O'Hara B

Athletics

Jnr Boy:	Kuta S	Jrn Girl:	Sienna G
11 Yr Boy:	Loche G	11 Yr Girl:	Ricada J
Snr Boy:	Sam B	Snr Girl:	Charlie D

Sporting Blues

Athletics & Swimming & Aerobics: Ricada J

Premier's Sport Challenge Sportsperson of the Year
Ricada J

Sportsperson of the Year
Lochie G

Special Prize Winners

Ken Brooks Aboriginal Cultural Award Stage 3

Charlie D

Ken Brooks Aboriginal Cultural Award Stage 2

Ashunti D

Junior Citizenship

Cooper M

Senior Citizenship

Jonah R

Renie Humphreys Infants Citizenship

Isobel T

Federal Award

Cody C

Pat Conroy Citizenship Award

O'Hara B

Galgabba Scholarship

Kane F

Melissa Thomas All Rounder Award

Annabella C

Ryan Award

Decan L

Frances Cameron Arts Award

Deegan MA

Stevens Library Award

Lilly M and Tahlia B

*Blacksmiths Home Hardware
Delta Club of Swansea Caves Beach
Macquarie Educational Tours
Mai Thai Restaurant
Rotary Club of Belmont
Swansea Hotel Social & Sport Group
Swansea RSL Club
Swansea Workers Coop*



**Thank You
to our sponsors**

**Congratulations to the 2017 Dux
Loretta P**

**Gifted & Talented Creative & Analytical
Skills Award
Locky G**

We have made some improvements to our system which now means that students who are progressing to year 3 and year 7 **do not need** to reapply if they meet the following three conditions:

1. are continuing at the same school
2. are residing at the same address
3. have not been sent an expiry notification from Transport for NSW.



The system has automatically validated a student's ongoing eligibility if they're at the same school and progressing to year 3 and year 7. Where a student met the new eligibility the system has updated their entitlement and card. If they didn't meet the new eligibility, they would have been sent an expiry notification.

If students need to update any information or reapply, they should go online to

<https://apps.transport.nsw.gov.au/ssts/updateDetails>.

Applications need to be submitted before 31 December 2017



In partnership with the New South Wales AECG.



www.facebook.com/swanseapublicschool

Annual Presentation Day

*Thank you
for attending*



In partnership with the New South Wales AECG.



www.facebook.com/swanseapublicschool

COMMUNITY NOTICES

Eyelash Lift only \$59

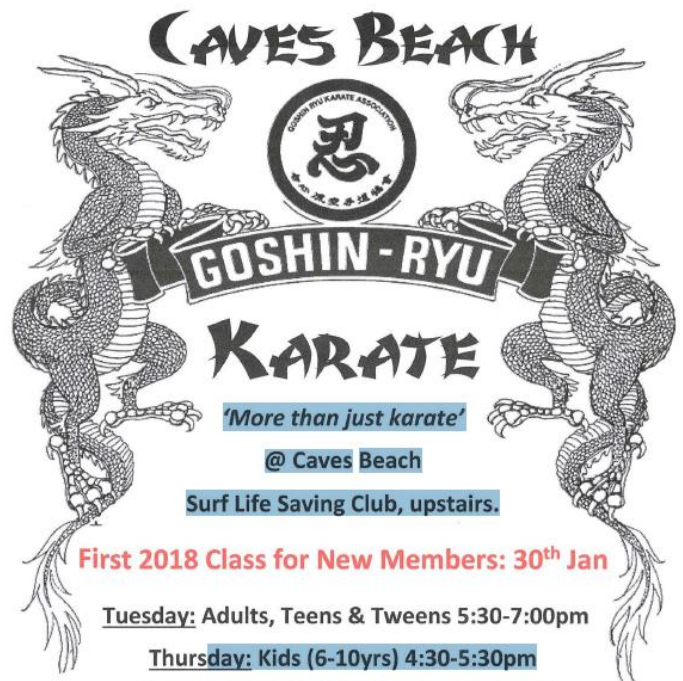
Our clients are amazed with the results.

**Enhancing your natural lashes for
6-8 weeks.**

**No more Curler or Mascara
You will have longer fuller Natural
looking lashes
Suitable for short or long eyelashes**



**Beauty Enhanced
Swansea
Ph:49721202**



First 2018 Class for New Members: 30th Jan

Tuesday: Adults, Teens & Tweens 5:30-7:00pm

Thursday: Kids (6-10yrs) 4:30-5:30pm

& Adults, Teens & Tweens 5:45-7:00pm



FIRST LESSON FREE

Search us on Facebook or call:

0423924840

PAYG class rate \$10

**Reasonable
Yearly Membership
& Insurance**

The fresh alternative for a healthy family

Miss Melon's Fruit & Veg

Market fresh fruit and veg direct to your door

Order Online Mob: 0491 106 649

www.missmelons.com.au

f Miss Melon's Fruit & Veg @missmelonsfnv



In partnership with the New South Wales AECG.



www.facebook.com/swanseapublicschool

The New Way

There will be changes in route services which may affect students

Newcastle Transport announced the new network last week, with more than a thousand extra bus and ferry services to be delivered when the new network is implemented on 14 January 2018.

The new network will improve bus connections between major hubs and the Newcastle CBD offering services every 15 minutes during the day, and will also strengthen links between suburbs and town centers.

Most of the bus routes have been revised and new bus routes have been added to the network to better meet customer needs. To match the new network, we have simplified the route numbers to double digits.

There are no changes to dedicated school services.

School students who use regular routes will need to check their route to and from school. Our Travel Concierge can be contacted at newcastletransport.info to provide assistance to parents and students in understanding the changes and planning their new trip.

There are a number of ways customers and the community can access information, including:

- At newcastletransport.info where you can view an interactive map of the network, download the new map and read about key timetable and route changes by area.
- Our Travel Concierge will provide assistance to customers to understand the changes and plan their new trip.
- The Newcastle Transport Hub at 152 Hunter Street, Newcastle, where the community can talk to the Newcastle Transport team face to face and provide feedback. The Hub is open Monday to Friday, between 8am and 5pm and between Saturdays 9am and 5pm.
- The Newcastle Transport Facebook page.
- Our customer service team will be out and about on the network and in local shopping centres. A calendar of locations will be available on the Newcastle Transport website.



**Newcastle
Transport**

PROUDLY OPERATED BY

